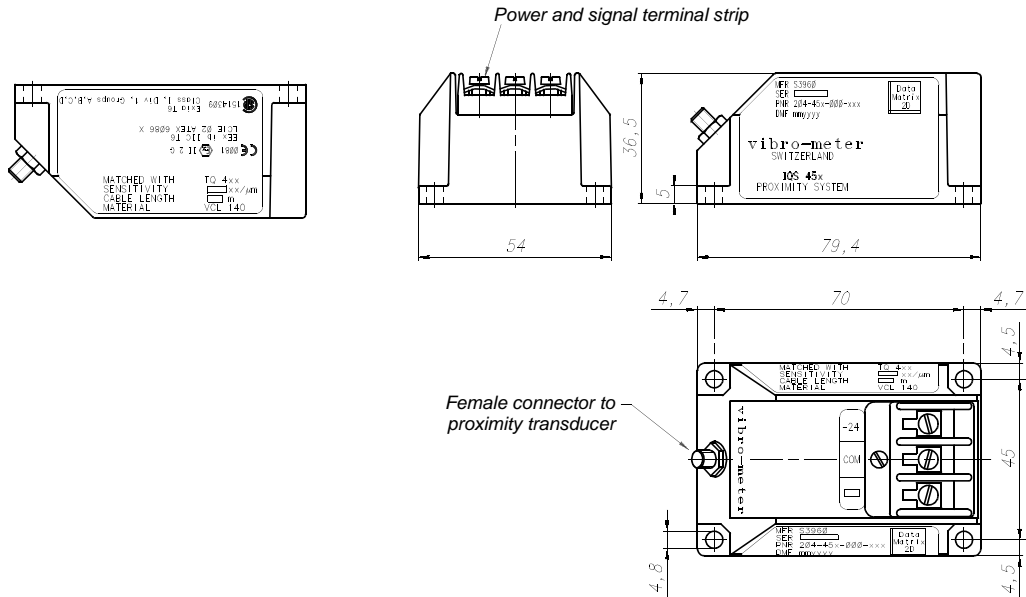


**DIMENSIONS AND ORDERING INFORMATION** (Continued)

**IQS 452 Signal Conditioner**



To order please specify :

IQS Type	Mode	Sensitivity	Total System Length	Version	Ordering Number
IQS 452	Voltage output, 3-wire configuration	4 mV/ $\mu$ m	5 m	Standard	204-452-000-01
			10 m	Standard	204-452-000-02
			5 m	Exi	204-452-000-03
			10 m	Exi	204-452-000-04
	Current output, 2-wire configuration <sup>1)</sup>	1.25 $\mu$ A/ $\mu$ m	5 m	Standard	204-452-000-11
			10 m	Standard	204-452-000-12
			5 m	Exi	204-452-000-13
			10 m	Exi	204-452-000-14

<sup>1)</sup> Current output is used in conjunction with GSI 124 galvanic separation

**ACCESSORIES**

JB 118 Junction box  
SG 102 Cable feedthrough



In this publication, a dot (.) is used as the decimal separator and thousands are separated by spaces. Example : 12 345.678 90. Although care has been taken to assure the accuracy of the data presented in this publication, we do not assume liability for errors or omissions. We reserve the right to alter any part of this publication without prior notice.